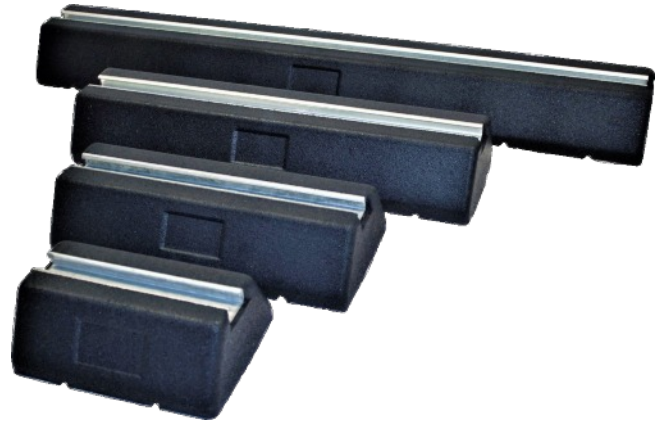


# StrutFoot

## SFR Rubber Feet

The 6 feet of the standard SFR range are a practical and versatile support solution for pipe work and cable trays. They can also be used for smaller outdoor condensing units or air source heat pump installations. The feet have a 41mm x 21mm 'bonded' in channel, which is recessed into the top face allowing you to use standard channel fixings to secure your services to the feet.



Our SFR range are made from Recycled SBR rubber, making them eco friendly. They also have the added advantage of vibration and noise absorption which makes them the perfect product for roof or ground level installation.

Part No	Model	Length (mm)	Width (mm)	Height (mm)	Max Loading Per Foot (kg)
SF4025	SFR250	250	180	95	160
SF4040	SFR400	400	180	95	240
SF4060	SFR600	600	180	95	450
SF4010	SFR1000	1000	180	95	645
SF4525	SFR250 Low	250	130	50	160
SF4540	SFR400 Low	400	130	50	240

Part No	Model	Length (mm)	Width (mm)	Height (mm)	Max Loading Per Foot (kg)
SF1560	SFR600 High Block	600	130	150	450
SF1512	SFR1200 High Block	1200	130	150	645

### MATERIAL SPECIFICATION

SBR-Recycled Rubber. Bound using a ratio of high quality moisture curing Polyurethane Pre-Polymer.  
BS7188:1989+A2;2009 and BS EN1176-7:2008

### METAL PROFILE

Aluminium strut 41mm x 21mm profile compatible with strut fixings.

### WORKING CONDITIONS

Suitable for internal or external applications in temperatures between -40°C to +80°C. BSEN60068-2-14



StrutFoot Ltd, Alma Street, Wednesbury, West Midlands, WS10 0QB.

E-mail: [sales@strutfoot.co.uk](mailto:sales@strutfoot.co.uk)

Phone: 01922 650174

Fax: 01922 614969